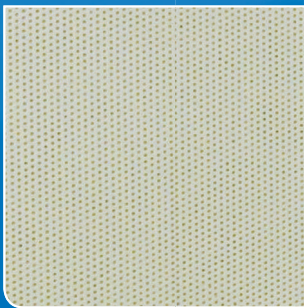


DW - Double Wall modular booth



Internal in perforated steel



- Modular soundproof booth with steel structure
- Great noise reduction up to 94 dB
- Complies with ISO 8253
- Available in a wide range of sizes



DW-2700



DW internal with double door



Internal view in perforated steel



All our cabins offer the best of Italian design



Product conforms with directive EEC/93/42
regarding class I medical devices

DW - Double Wall Technical specification

Available sizes (bespoke sizes on request)

Code	Outside Dimensions (LxWxH)	Inside Dimensions (LxWxH)	Ext. sq.m	Weight	Air System
DW-2400	240 x 240 x 290 cm	180 x 180 x 200 cm	5.76	3100 Kg	included
DW-2500	250 x 250 x 290 cm	190 x 190 x 200 cm	6.25	3200 Kg	included
DW-2600	260 x 260 x 290 cm	200 x 200 x 200 cm	6.76	3300 Kg	included
DW-2700	270 x 270 x 290 cm	210 x 210 x 200 cm	7.29	3500 Kg	included
DW-2800	280 x 280 x 290 cm	220 x 220 x 200 cm	7.84	3600 Kg	included
DW-2900	290 x 280 x 290 cm	230 x 220 x 200 cm	8.12	3700 Kg	included
DW-3100	310 x 310 x 290 cm	250 x 250 x 200 cm	9.61	3900 Kg	included

Applications

PROMETAL line is recommended for clinical analyses and diagnostic tests in hospitals and specialized audiology centers to perform in-depth examinations where the noise environment is high and could affect the ENT tests results. Its modular solutions are suitable for different applications such as Free Field test.

Structure

Panels are specially designed to be easily assembled and removed and are completely made of scoured steel plate. Cabin is electrostatically painted.

Double wall

Double wall cabins available in standard and special sizes consist of a structurally isolated inner room and outer room not mounted on the same base. Double-walled construction with 10 cm external panel + 10 cm air between panels and 10 cm internal panel thickness with double door for superior noise reduction.

Exterior

The exterior finishing is made of a metal highly-resistant, fireproof, washable panel.

Interior

The interior finishing is made of sound absorbing perforated sheet metal (washable and fireproof) for a perfect acoustic environment.

Doors

Double door with mechanical closing system are opened from inside/outside with a comfortable clear opening for standard wheelchairs passage. A special ramp system for easy access is optional. Standard clear opening 80x187 cm (w x h).

Window

The window is large to provide better visibility to the doctor and consists of a special double soundproof glass.

Floor

The cabin is installed on a 10 cm thickness base and stands on special anti-vibration adjustable feet. Finishing in technical, anti-static, fireproof, washable PVC (linoleum).

Ventilation system

Air ventilation (air exchange system) is guaranteed by a silent forced ventilation

system mounted on top of the booth (cm 245 booth + cm 45 air system). Air ventilation can be also installed on the walls to save space in height.

Connecting instruments

Jack panel system positioned below the window and composed by 12 jack. Connections for free field available only from DW-2700 upwards (on request).

Electrical System

Electrical system has been specially designed to be invisible with cables hidden inside the panels. Switches for lighting and ventilation are separated. On request power sockets (inside/outside) which are embedded in the panels. Cabin is lightened by a LED light. Power supply: 220 V. - 50/60 Hz. with grounding system.



Noise reduction Product conforms with international UNI EN ISO 8253-1:2010 standard.

Acoustic insulation

Hertz	125	250	500	1000	2000	4000	8000
dB	47.5	53.3	69.2	80.8	92.6	94.8	91.2

Optional equipment

- External table (100 x 60 cm)
- Internal table (65 x 45 cm)
- Ramps for easy access
- Modification Voltage 110 V.
- Free field configuration
- Emergency Light
- Internal power sockets
- External power sockets
- Ventilation on wall
- Modification door opening 90 cm
- Special sizes
- USB connection
- Universal connection panel

Packing

Delivered for shipping in a ISPM wooden case.

Installation

DW is installed by our specialized staff. The installation needs 15 cm overall each side (l x w x h).

Notes

The materials are fireproof at the origin. Specifications are subject to change without notice. Warranty: limited to one year from delivery date.

This product can be sanitized according to the environmental disinfection procedures indicated by the Italian Ministry of Health.

Standards

Medical Device Class I
MDD 93/42/CEE
2007/47/CE - CEI 64/11
CEI 64/8 2006/95/CE
UNI EN ISO 8253 1:2010.

